

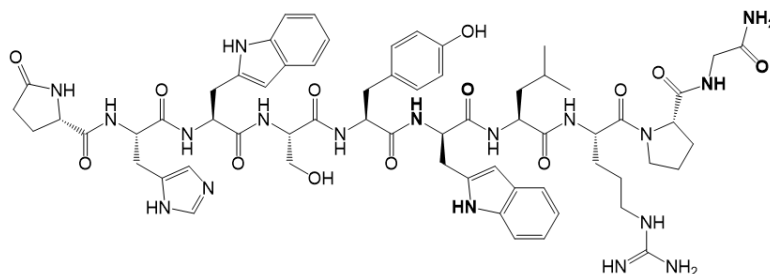
## **List of Active Pharmaceutical Ingredients (API)**

# **Peptides**

## **GnRH Analogues**

**API: Triptorelin Acetate**

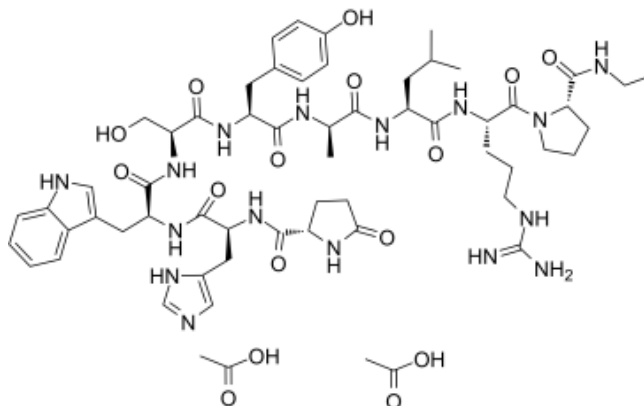
**Chemical Structure:**



**Sequence:** Pyr-His-Trp-Ser-Tyr-D-Trp-Leu-Arg-Pro-Gly-NH<sub>2</sub>

**API: Alarelin Acetate**

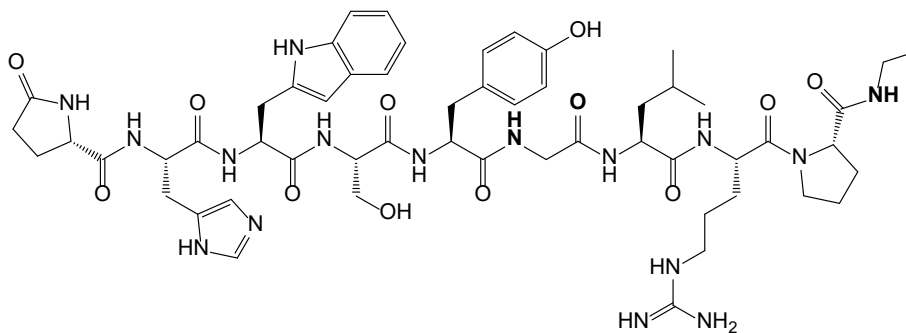
**Chemical Structure:**



**Sequence:** H-Pyr-His-Trp-Ser-Tyr-D-Ala-Leu-Arg-Pro-NHEt.2CH<sub>3</sub>CO<sub>2</sub>H

**API: Fertirelin Acetate**

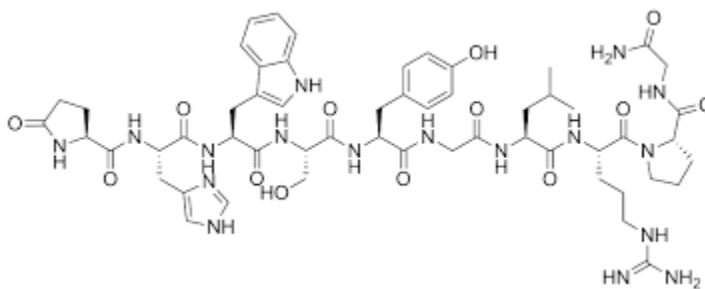
**Chemical Structure:**



**Sequence:** Pyr-His-Trp-Ser-Tyr-Gly-Leu-Arg-Pro-NHEt

**API: Gonadorelin**

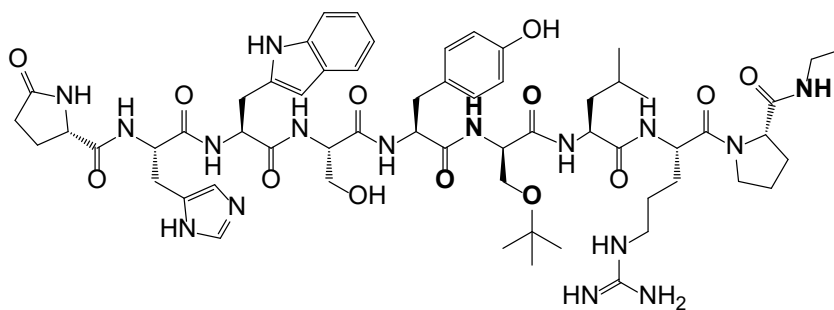
**Chemical Structure:**



**Sequence:** H-Pyr-His-Trp-Ser-Tyr-Gly-Leu-Arg-Pro-Gly-NH<sub>2</sub>

**API: Buserelin Acetate**

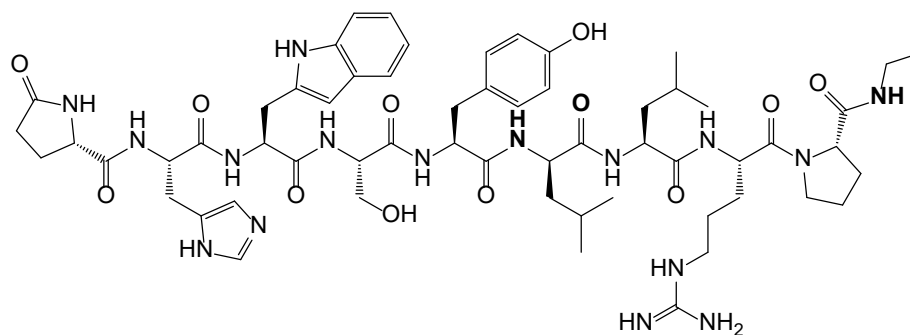
**Chemical Structure:**



**Sequence:** Pyr-His-Trp-Ser-Tyr-D-Ser(tBu)-Leu-Arg-Pro-NHEt

**API: Leuprolide Acetate**

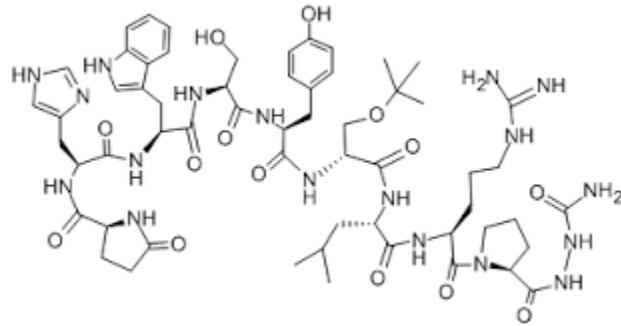
**Chemical Structure:**



**Sequence:** Pyr-His-Trp-Ser-Tyr-D-Leu-Leu-Arg-Pro-NHEt

**API: Goserelin Acetate**

**Chemical Structure:**

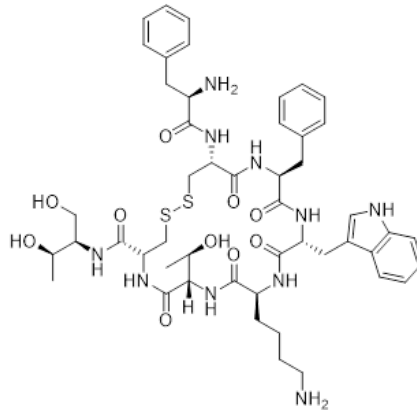


**Sequence:** H-Pyr-His-Trp-Ser-Tyr-D-Ser(tBu)-Leu-Arg-Pro-NHNHCONH<sub>2</sub>.CH<sub>3</sub>CO<sub>2</sub>H

# Other Peptides

**API: Octreotide Acetate**

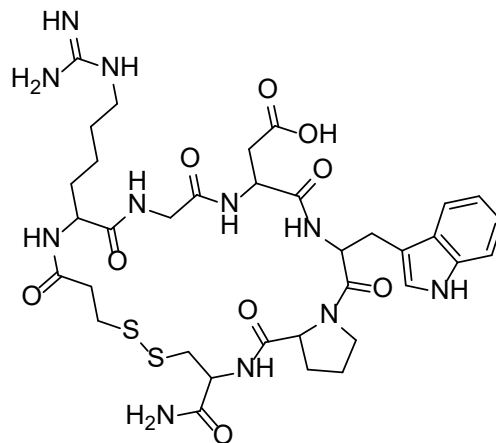
**Chemical Structure:**



**Sequence:** H<sub>2</sub>N-D-Phe-Cys-Phe-D-Trp-Lys-Thr-Cys-Thr-ol (Disulfide Bridge Cys2-Cys7)

**API: Eptifibatid**

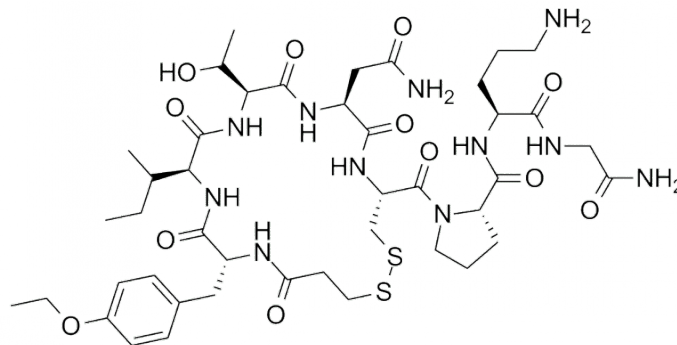
**Chemical Structure:**



**Sequence:** Mpr-Har-Gly-Asp-Trp-Pro-Cys-NH<sub>2</sub>

**API: Atosiban Acetate**

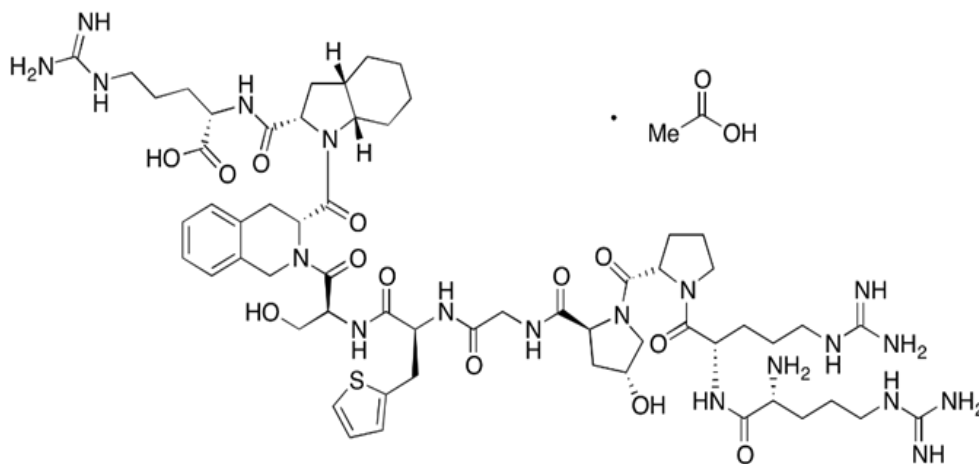
**Chemical Structure:**



**Sequence:** 3-Mercaptopropionyl-D-Tyr(Et)-Ile-Thr-Asn-Cys-Pro-Orn-Gly-NH<sub>2</sub>

**API: Icatibant Acetate**

**Chemical Structure:**

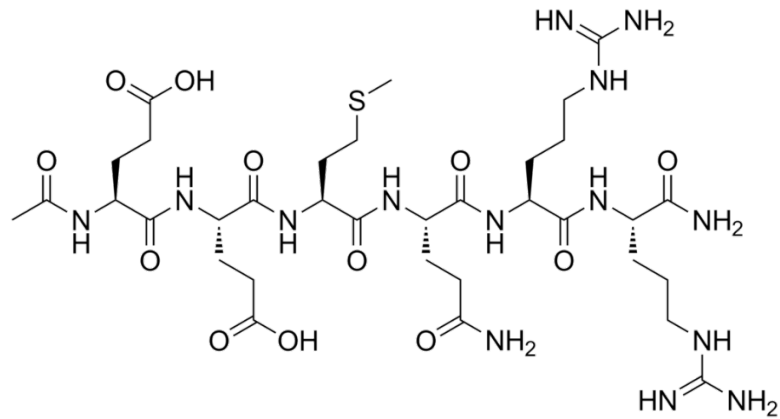


**Sequence:** D-Arg-Arg-Pro-Hyp-Gly-Thi-Ser-Tic-Oic-Arg

# Cosmetic peptides

**API: Argireline Acetate**

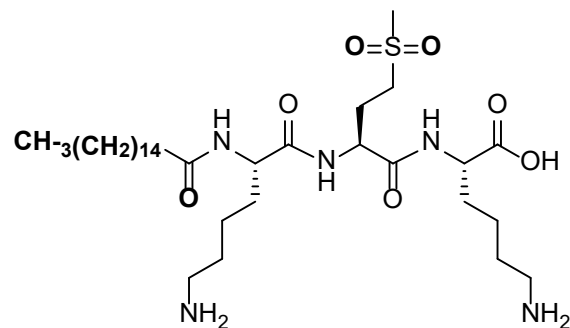
**Chemical Structure:**



**Sequence:** Ac-Glu-Glu-Met-Gln-Arg-Arg-NH<sub>2</sub>

**API: Pal-KM(O<sub>2</sub>)K**

**Chemical Structure:**

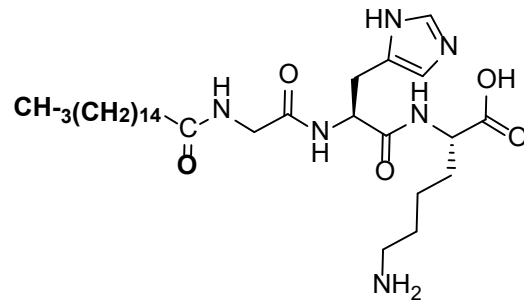


**Sequence:** Pal-Lys-Met (O<sub>2</sub>)-Lys-OH



**API: Pal-GHK**

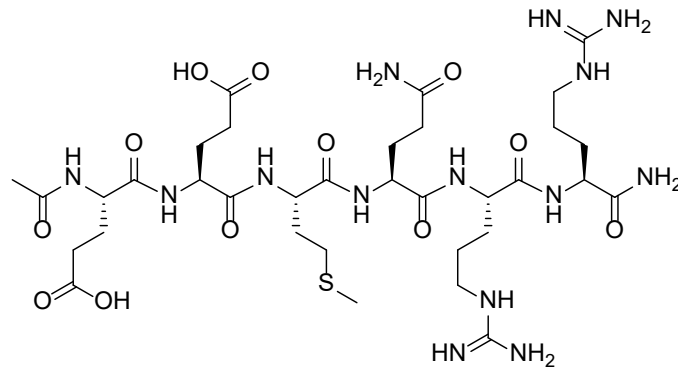
**Chemical Structure:**



**Sequence: Palmitoyl-Gly-His-Lys**

**API: Hexapeptide-10**

**Chemical Structure:**

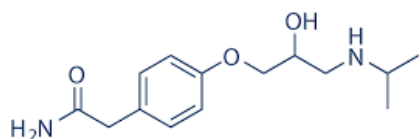


**Sequence: H-Ser-Ile-Lys-Val-Ala-Val-OH**

## Other API

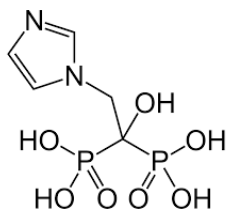
API: **Atenolol**

Chemical Structure:



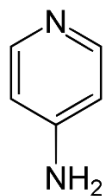
API: **Zoledronic Acid**

Chemical Structure:



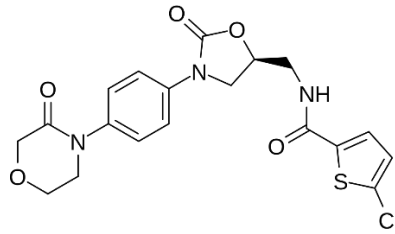
API: **Fampyra**

Chemical Structure:



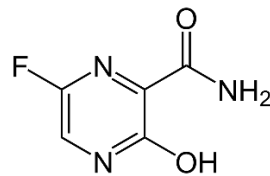
**API: Rivaroxaban**

**Chemical Structure:**



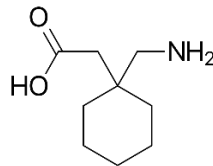
**API: Favipiravir**

**Chemical Structure:**



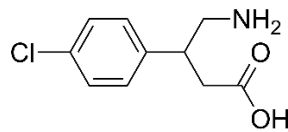
**API: Gabapentin**

**Chemical Structure:**



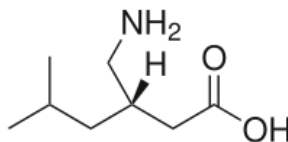
**API: Baclofen**

**Chemical Structure:**



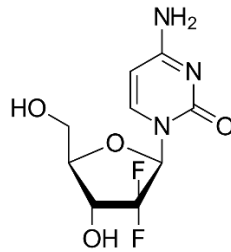
**API: Pregabalin**

**Chemical Structure:**



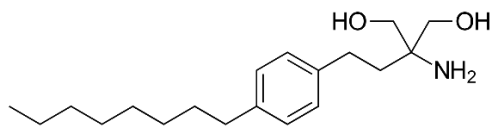
**API: Gemcitabine**

**Chemical Structure:**



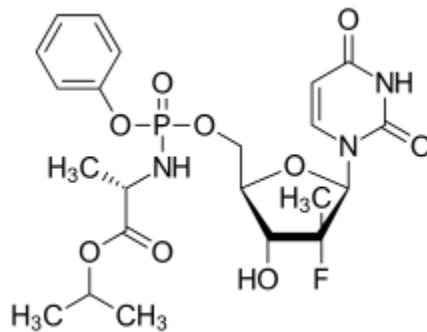
**API: Fingolimod**

**Chemical Structure:**



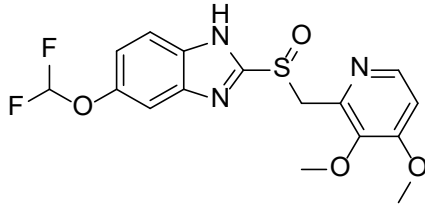
**API: Sofosbuvir**

**Chemical Structure:**



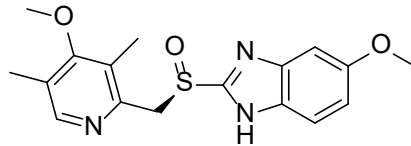
**API: Pantoprazole**

**Chemical Structure:**



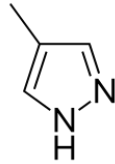
**API: Omeprazole**

**Chemical Structure:**



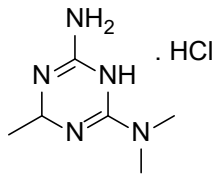
**API: Fomepizole**

**Chemical Structure:**



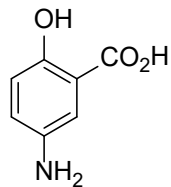
**API: Imeglemin**

**Chemical Structure:**



**API: Mesalazine**

**Chemical Structure:**



**API: Valsartan**

**Chemical Structure:**

